



# Smart Meter

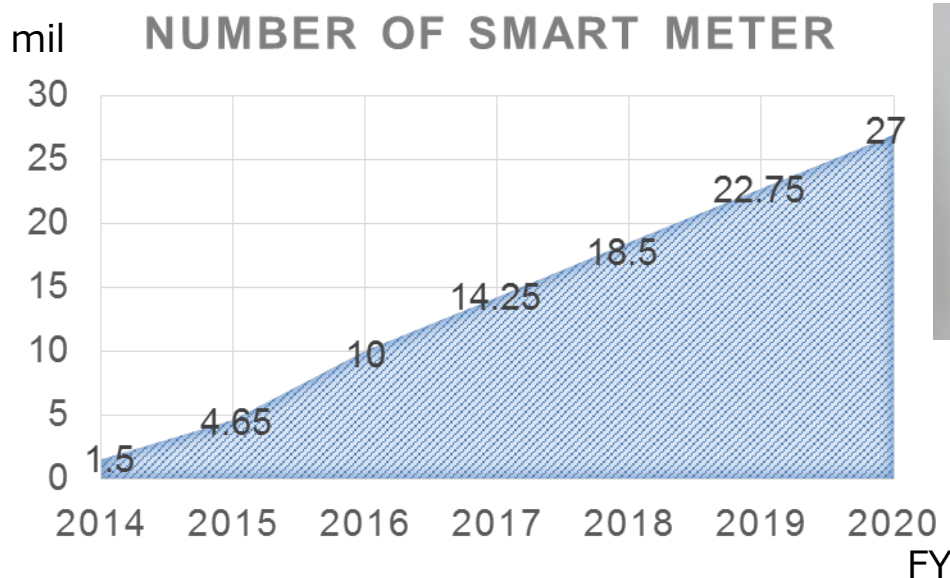
Fumitoshi WATAHIKI  
New Growth Task Force

Tokyo Electric Power Company Holdings, Inc.

2016/08/17

# Smart Meter Installation

- ✓ 27 mil smart meters will be installed in TEPCO's service territories by 2020.
- ✓ IEC based smart meters are modified in accordance with various tariff system of service providers.



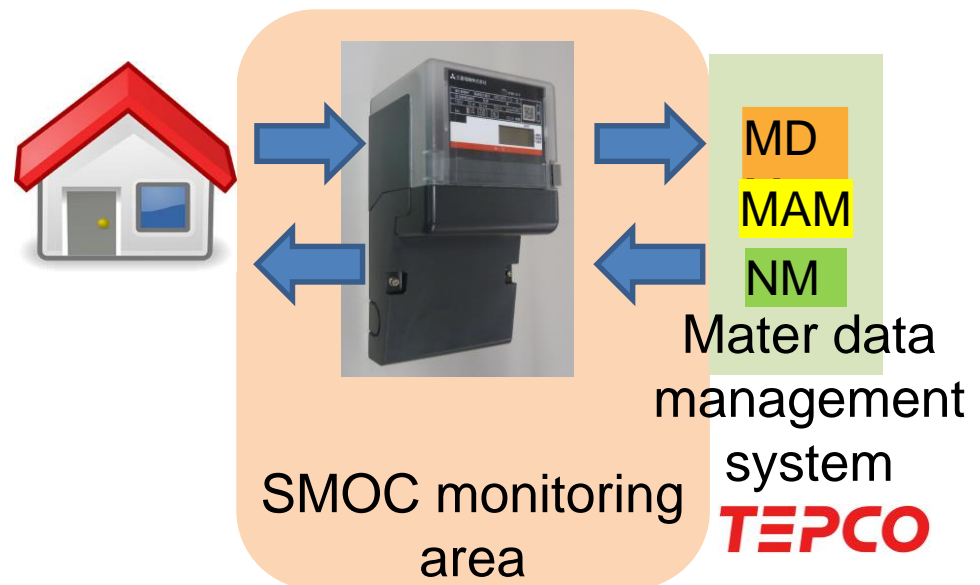
- ✓ Metering and storing data in 30 min.
- ✓ Remote disconnect/reconnect
- ✓ Emergency demand limit
- ✓ IEC follows

# Smart Meter System Operation

- ✓ TEPCO established Smart Meter Operation Center (SMOC) in 2015.
- ✓ Network system is protected by the Cyber Security Function of SMOC.

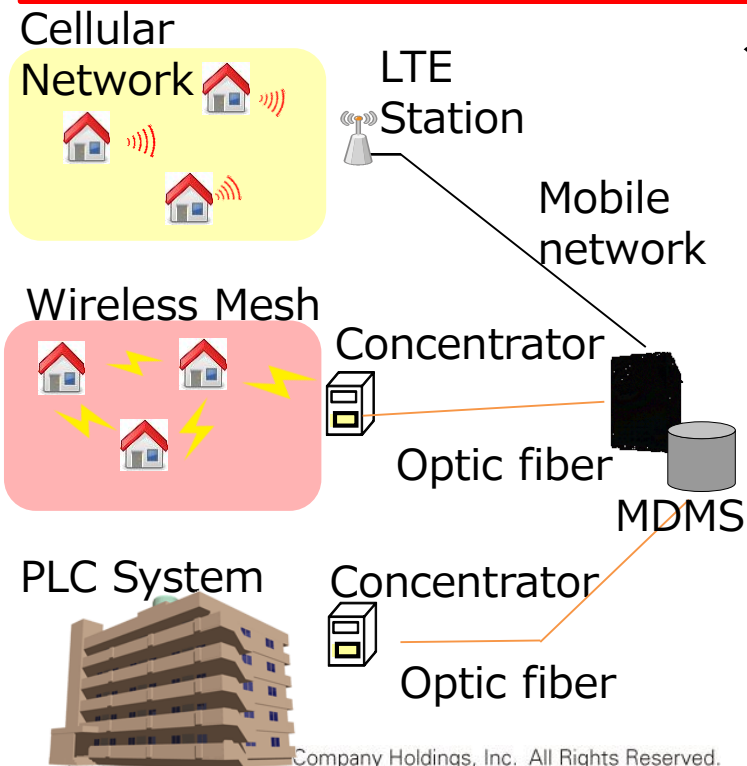


- ✓ 24 hour operation.
- ✓ Network security monitoring.
- ✓ Emergency response.



# Communication System

- ✓ Multi Communication System is applied for short term deployment of smart meter and reliable transmission.
- ✓ Flexible platform is designed for new customer service in next generation.



- ✓ Optimal Communication system is selected for each site.

	Advantage	Disadvantage	Suitable areas
Wireless Mesh	Low cost	Needs high density	City Center
Cellular	Early deployment	High cost	Suburban area
PLC	No local network	<ul style="list-style-type: none"> <li>• Middle cost</li> <li>• Unstable</li> </ul>	Large Scale Mansion